

CERTIFICATE OF LOCATION OF GOVERNMENT CORNER

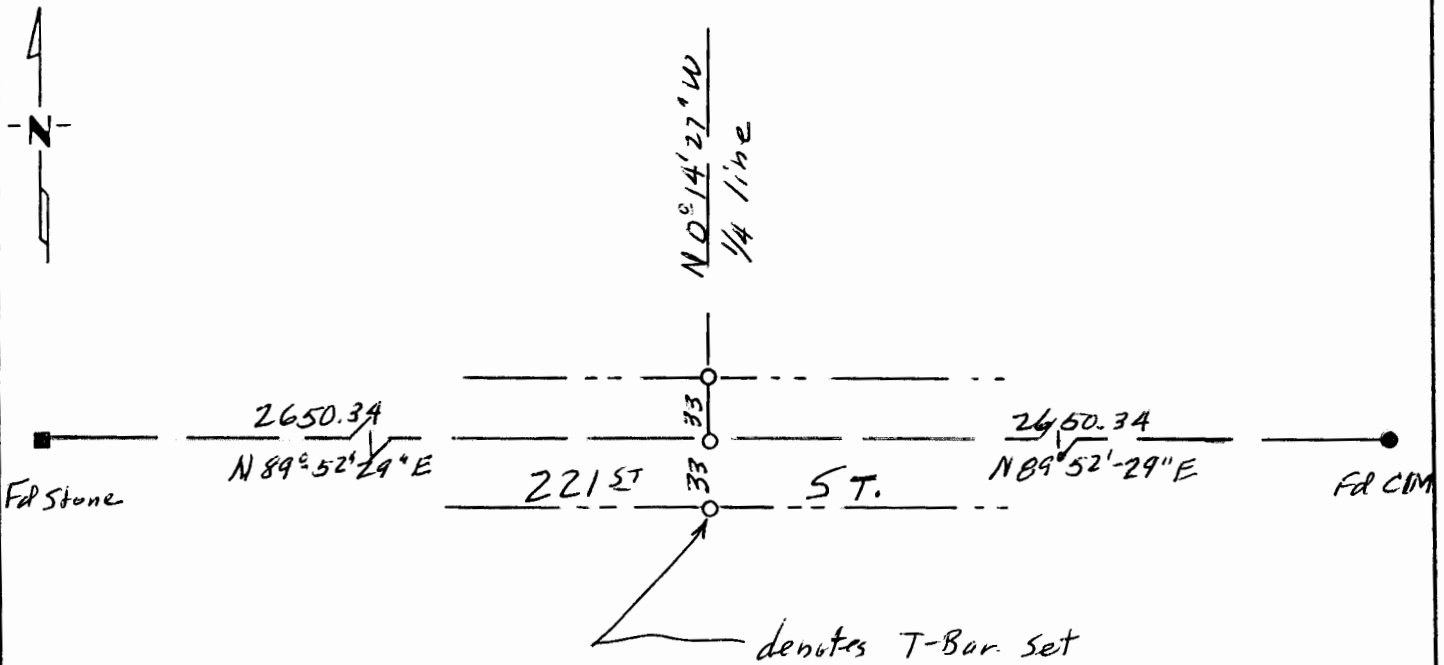
SOUTH 1/4 Corner of Section 9, Township 108, Range 41, 5 P.M.

STATE OF MINNESOTA, County of MURRAY

At the corner location shown on the sketch:

- On 7-16-2002 found a nothing near middle of Section except for a wood post
DATE
lying N-S at approx middle of Section
 left monument as found, lowered monument, removed monument (explain)
- On 5-28-03 placed a Iron T-Bar at Mid-point of Section 9 on line between
DATE
the SW Cor. and the SE Cor. of Section 9

SKETCH OF REFERENCE TIES



Statement of evidence relative to this corner location is on back of page.

I hereby certify that this document and the data contained herein was prepared by me or under my direct supervision.

Shel J. Vechem 7-16-2003
SIGNATURE DATE

Registration No. 12237

- Land Surveyor, Professional Engineer
- County Surveyor, County Engineer

OFFICE OF THE REGISTER OF DEEDS

County of _____

I hereby certify that this document was filed in the Reg. of Deeds office at _____ .M. on the _____ day of MAY 17 2004 A.D., 19 _____

Register of Deeds Jamie V. Johnson

By _____, Deputy

DOCUMENT NO. _____

Statement of Evidence:

Original corner set by Govt. Survey and marked by
Pits and marks.

South line of Section measured at 80.34 chains or 5302.44 feet

Our distance is 5300.68 feet for the south line.

We dug for monumentation of a corner at 10 feet x 30 feet hole
near middle of Sec 9. Found a wood post lying N-S at about
mid-point. No stones or Iron located.

Accepted corner was lost - Set south $\frac{1}{4}$ corner at mid-point
on line of SE & SW corners.